

OFFICIAL NCAA BASKETBALL BOX SCORE
Presentation Toppers vs Union County Bravettes

03/22/2000 3:00 pm
Final Box Score

Arena Girls' Sweet 16, McBrayer Arena
City, State Richmond, KY

No.	Presentation Toppers	Total FG		3-point		FT	FTA	Rebounds			F	TP	A	TO	BLK	STL	MIN
		FG	FGA	FG	FGA			Off	Def	Tot							
4	April Young	0	1	0	0	0	2	0	0	0	0	0	0	0	0	1:04	
10	* Anne Hutchens	5	9	2	3	5	6	1	7	8	2	17	3	2	2	0	27:55
12	Blaire Nail	0	3	0	0	0	0	0	1	1	3	0	1	4	0	1	15:48
14	Susanne Firestone	0	0	0	0	0	0	0	0	0	0	0	0	0	0	0	1:04
20	* Julia Reed	1	1	0	0	1	3	2	2	4	0	3	0	2	0	0	14:10
22	* Sarah Nash	3	6	0	0	2	2	2	2	4	0	8	1	3	0	3	22:47
24	Dominique Derrick	1	3	0	0	1	3	0	2	2	3	3	2	2	0	2	21:33
30	Megan Maquire	0	0	0	0	0	0	0	0	0	1	0	0	0	0	0	1:06
34	* Morgan Darby	1	2	1	2	0	0	0	0	0	0	3	1	2	0	0	17:35
40	* Joleen Phillips	5	8	1	2	6	10	2	3	5	3	17	1	0	0	1	19:37
42	Kristy Lynch	0	0	0	0	0	0	0	1	1	0	0	0	0	0	0	0:50
44	Amy Lynch	2	7	0	0	2	2	1	2	3	1	6	1	0	0	0	12:23
50	Jessica Votaw	1	1	1	1	0	0	0	0	0	0	3	0	0	0	0	1:38
52	Stephanie Johnson	0	0	0	0	0	0	0	0	0	0	0	0	0	0	0	1:40
54	Celia Hall	0	2	0	1	0	0	1	0	1	0	0	0	1	0	0	0:50
Team (included in Totals)								5	5	10							
Totals		19	43	5	9	17	28	14	25	39	13	60	10	16	2	7	160

Total FG%: 1st half 11 - 21 (52.4%) 2nd half 8 - 22 (36.4%) Game 19 - 43 (44.2%)
 3Pt FG%: 1st half 3 - 6 (50.0%) 2nd half 2 - 3 (66.7%) Game 5 - 9 (55.6%)
 FT%: 1st half 8 - 10 (80.0%) 2nd half 9 - 18 (50.0%) Game 17 - 28 (60.7%)

Deadball rebounds
2

No.	Union County Bravettes	Total FG		3-point		FT	FTA	Rebounds			F	TP	A	TO	BLK	STL	MIN
		FG	FGA	FG	FGA			Off	Def	Tot							
10	Kayla Tackett	0	0	0	0	0	0	0	0	0	0	0	0	0	0	0	1:04
11	* Kwila Kinard	5	9	0	0	1	1	2	2	4	5	11	4	1	0	2	26:11
12	Susan Byars	1	5	0	0	0	1	2	0	2	3	2	0	0	1	1	13:35
14	Megan Yates	0	0	0	0	0	0	0	1	1	1	0	0	0	1	0	1:06
15	Erin Gorman	0	0	0	0	0	1	0	0	0	0	0	0	0	0	0	1:06
20	Elizabeth Robinson	1	4	1	4	0	0	2	1	3	1	3	1	0	0	0	14:04
21	* Brandy Willett	2	8	1	4	1	2	0	2	2	3	6	1	3	0	2	24:04
22	Abby O'Nan	0	0	0	0	0	0	0	0	0	0	0	0	0	0	0	0:32
24	* Terra Caudill	1	5	0	1	0	1	1	2	3	1	2	0	4	0	0	20:45
30	* Kara Willett	1	6	0	0	0	0	2	4	6	4	2	2	1	3	1	24:02
32	* Brandi Young	2	4	0	0	0	0	0	2	2	5	4	1	3	0	1	16:47
35	Christy Jenkins	0	0	0	0	0	0	0	2	2	0	0	0	1	0	0	0:52
40	Devon Bradshaw	0	0	0	0	0	0	0	0	0	0	0	0	0	0	0	2:26
51	Jenna Thomas	0	0	0	0	0	0	0	0	0	0	0	0	0	0	0	0:50
54	Sara Buckman	3	10	1	4	0	0	1	1	2	0	7	0	3	0	0	12:36
Team (Included in Totals)								4	1	5							
Totals		16	51	3	13	2	6	14	18	32	23	37	9	16	5	7	160

Total FG%: 1st half 6 - 20 (30.0%) 2nd half 10 - 31 (32.3%) Game 16 - 51 (31.4%)
 3Pt FG%: 1st half 0 - 4 (0.0%) 2nd half 3 - 9 (33.3%) Game 3 - 13 (23.1%)
 FT%: 1st half 1 - 3 (33.3%) 2nd half 1 - 3 (33.3%) Game 2 - 6 (33.3%)

Deadball rebounds
2

Technical Fouls: None

Attendance: 4,362

Officials: John Chamberlain, Eric Canady, Glenn Gray

Score by Period	1st H	2nd H	OT	OT	Final	Record	Overall	Conf
Union County Bravettes	13	24	0	0	37	Bravettes	23-7	
Presentation Toppers	33	27	0	0	60	Toppers	26-3	

	Bravettes Toppers		Bravettes Toppers		Bravettes Toppers			
Points off Turnovers	13	14	Second Effort Points	4	12	Bench Points	12	12
Points in the Paint	20	22	3 Point Points	9	15	Free Throw Points	2	17
Largest Lead	18	41 (23 pts)	Lead Changes	2		Number of Ties	3	

University of Kentucky Basketball - Play by Play Report - Period 1 (pg 1)
Union County Bravettes vs. Presentation Toppers
Date: 03/22/2000 Time: 3:00 pm Site: Girls' Sweet 16, McBrayer Arena-Richmond, KY Attendance:

##	Name	Action	Action	Score	Clock	Diff	##	Name	Action	Action
11	K Kinard	Start Game					10	A Hutchens	Start Game	
21	B Willett	Start Game					20	J Reed	Start Game	
24	T Caudill	Start Game					22	S Nash	Start Game	
30	K Willett	Start Game					34	M Darby	Start Game	
32	B Young	Start Game					40	J Phillips	Start Game	
30	K Willett	Jump Ball Loss			1 7:58		22	S Nash	Jump Ball Win	
					1 7:51		34	M Darby	3Pt Attempt	10 A Hutchens Off Reb
30	K Willett	Personal Foul		0-1	1 7:49	-1	10	A Hutchens	FT Made	
				0-2	1 7:49	-2	10	A Hutchens	FT Made	
30	K Willett	FG Attempt			1 7:38		10	A Hutchens	Def Rebound	
					1 7:22		34	M Darby	Turn Over	(Bad Pass)
21	B Willett	Steal			1 7:19					
32	B Young	Turn Over	(Fumble)		1 7:08					
Bravettes		Def Rebound	(Dead Ball Reb)		1 6:58		40	J Phillips	3Pt Attempt	
					1 6:57		40	J Phillips	Personal Foul	
11	K Kinard	Layup Made		2-2	1 6:51 (T1)					
				2-4	1 6:07	-2	10	A Hutchens	FG Made	
11	K Kinard	Layup Made		4-4	1 5:58 (T2)					
				4-6	1 5:35	-2	40	J Phillips	FG Made	
32	B Young	FG Made	30 K Willett Assist	6-6	1 5:14 (T3)					
11	K Kinard	Def Rebound			1 5:04		22	S Nash	FG Attempt	
11	K Kinard	Layup Made		8-6	1 4:57 +2 (L1)		10	A Hutchens	3Pt Made	22 S Nash Assist
				8-9	1 4:37 -1 (L2)					
21	B Willett	Turn Over	(Bad Pass)		1 4:32					
32	B Young	Personal Foul			1 4:15		20	J Reed	FT Attempt	Toppers Deadball Reb
24	T Caudill	Leave Game			1 4:15		20	J Reed	FT Attempt	
12	S Byars	Enter Game	for 32 B Young		1 4:15					
54	S Buckman	Enter Game			1 4:15		12	B Nall	Enter Game	for 20 J Reed
21	B Willett	Personal Foul			1 4:13					
					1 4:13		40	J Phillips	FG Made	
21	B Willett	Def Rebound			1 4:13		40	J Phillips	FT Made	
12	S Byars	FG Attempt	Bravettes Off Reb		1 4:12					
					1 4:05					
54	S Buckman	Turn Over	(Traveling)		1 3:38		40	J Phillips	FG Made	
				8-11	1 3:22	-3	40	J Phillips	FT Made	
30	K Willett	Personal Foul		8-12	1 3:22	-4				
32	B Young	Enter Game	for 30 K Willett		1 3:22		40	J Phillips	Personal Foul	
					1 3:17		24	D Derrick	Enter Game	for 40 J Phillips
					1 3:17		22	S Nash	Def Rebound	
54	S Buckman	3Pt Attempt			1 2:51		22	S Nash	Layup Att	
32	B Young	Def Rebound			1 2:46					
32	B Young	Turn Over			1 2:45					
					1 2:45					
20	E Robinson	Enter Game	for 32 B Young		1 2:45		22	S Nash	FG Made	12 B Nall Assist
32	B Young	Enter Game	for 21 B Willett		1 2:45					
				8-14	1 2:40	-6				
12	S Byars	FG Made	32 B Young Assist	10-14	1 2:09	-4	12	B Nall	Personal Foul	
					1 2:09		22	S Nash	Def Rebound	
12	S Byars	FT Attempt			1 1:47		22	S Nash	Turn Over	
					1 1:47					
11	K Kinard	Steal			1 1:47					
11	K Kinard	Leave Game			1 1:47					
21	B Willett	Enter Game	for 54 S Buckman		1 1:47					
24	T Caudill	Enter Game			1 1:47					
24	T Caudill	FG Attempt			1 1:18		12	B Nall	Def Rebound	
					1 0:55		10	A Hutchens	Turn Over	
32	B Young	Steal			1 0:54					
32	B Young	Turn Over	(Bad Pass)		1 0:54					
11	K Kinard	Enter Game	for 20 E Robinson		1 0:54					
					1 0:54		12	B Nall	Turn Over	(Traveling)
21	B Willett	3Pt Attempt			1 0:39		Toppers	Def Rebound		
					1 0:28		24	D Derrick	Turn Over	(Fumble)
32	B Young	FG Made	11 K Kinard Assist	12-14	1 0:19	-2				

End of Period Summary Bravettes 12 Toppers 14

Largest Lead: Bravettes 8 Toppers 14 (6 pts)

Lead Changes: 2 Ties: 3

University of Kentucky Basketball - Play by Play Report - Period 1 (pg 2)

Union County Bravettes vs. Presentation Toppers

Date: 03/22/2000 Time: 3:00 pm Site: Girls' Sweet 16, McBrayer Arena-Richmond, KY Attendance:

##	Name	Action	Action	Score	Clock	Diff	##	Name	Action	Action
		Lead in Period: Bravettes 8	Toppers 14 (6 pts)						Lead Changes: 2	Ties: 3 (this period)
		5 for 5 oppo pts			Turnovers				5 for 2 oppo pts	
		1 for 0 pts			2nd Chances				1 for 2 pts	
		6/11 for 54.5 %			Field Goals				5/9 for 55.6 %	
		0/1 for 0.00 %			Free Throws				3/5 for 60.0 %	

University of Kentucky Basketball - Play by Play Report - Period 2 (pg 1)

Union County Bravettes vs. Presentation Toppers

Date: 03/22/2000 Time: 3:00 pm Site: Girls' Sweet 16, McBrayer Arena-Richmond, KY Attendance:

##	Name	Action	Action	Score	Clock	Diff	##	Name	Action	Action
30	K Willett	Enter Game	for 12 S Byars		2 8:00					
				12-16	2 7:46	-4	24	D Derrick	FG Attempt	22 S Nash Off Reb
24	T Caudill	FG Attempt			2 7:17		22	S Nash	Putback Made	
				12-19	2 6:59	-7		Toppers	Def Rebound	
					2 6:40		34	M Darby	3Pt Made	
					2 6:40		24	D Derrick	Personal Foul	
21	B Willett	Turn Over	(Bad Pass)		2 6:25		44	A Lynch	Enter Game	for 22 S Nash
					2 6:23		12	B Nall	Steal	
11	K Kinard	Personal Foul			2 6:07					
				12-22	2 6:00	-10	10	A Hutchens	3Pt Made	44 A Lynch Assist
					2 5:43		10	A Hutchens	Personal Foul	
Bravettes	Time Out				2 5:43					
21	B Willett	FT Attempt	Bravettes Deadball Reb		2 5:43					
21	B Willett	FT Made			13-22	2 5:43	-9			
				13-24	2 5:27	-11	44	A Lynch	Layup Made	10 A Hutchens Assist
11	K Kinard	FG Attempt	30 K Willett Off Reb		2 4:50					
54	S Buckman	Enter Game	for 32 B Young		2 4:47					
54	S Buckman	Turn Over	(Traveling)		2 4:47					
					2 4:45		10	A Hutchens	Turn Over	(Traveling)
12	S Byars	Enter Game	for 24 T Caudill		2 4:45					
11	K Kinard	Turn Over			2 4:35					
				13-26	2 4:32	-13	44	A Lynch	FG Made	10 A Hutchens Assist
12	S Byars	FG Attempt			2 4:12		10	A Hutchens	Def Rebound	
30	K Willett	Def Rebound			2 4:01		24	D Derrick	FG Attempt	
21	B Willett	3Pt Attempt	12 S Byars Off Reb		2 3:50					
30	K Willett	FG Attempt			2 3:44		24	D Derrick	Def Rebound	
30	K Willett	Personal Foul			2 3:27					
12	S Byars	Leave Game			2 3:27					
21	B Willett	Leave Game			2 3:27					
20	E Robinson	Enter Game	for 54 S Buckman		2 3:27					
24	T Caudill	Enter Game			2 3:27					
32	B Young	Enter Game			2 3:27					
					2 3:27		12	B Nall	Leave Game	
					2 3:27		20	J Reed	Enter Game	for 34 M Darby
					2 3:27		22	S Nash	Enter Game	
				13-27	2 3:27	-14	10	A Hutchens	FT Made	
				13-28	2 3:27	-15	10	A Hutchens	FT Made	
24	T Caudill	FG Attempt	Bravettes Off Reb		2 3:13					
24	T Caudill	Turn Over	(Bad Pass)		2 3:01					
					2 2:58		22	S Nash	Steal	
					2 2:46		22	S Nash	Turn Over	(Bad Pass)
					2 2:44					
30	K Willett	Steal			2 2:40		10	A Hutchens	Block	
11	K Kinard	FG Attempt	11 K Kinard Off Reb		2 2:35		20	J Reed	Def Rebound	
30	K Willett	FG Attempt			2 2:22		44	A Lynch	FG Attempt	22 S Nash Off Reb
					2 2:20		22	S Nash	Putback Att	Toppers Off Reb
30	K Willett	Block			2 1:58		10	A Hutchens	3Pt Attempt	
24	T Caudill	Def Rebound			2 1:57		44	A Lynch	Personal Foul	
					2 1:32		10	A Hutchens	Def Rebound	
20	E Robinson	3Pt Attempt			2 0:57	-16	22	S Nash	FT Made	
32	B Young	Personal Foul		13-29	2 0:57	-17	22	S Nash	FT Made	
				13-30	2 0:40					
24	T Caudill	Turn Over	(Bad Pass)		2 0:38		24	D Derrick	Steal	
					2 0:28		44	A Lynch	FG Attempt	20 J Reed Off Reb
				13-32	2 0:26	-19	20	J Reed	Putback Made	
					2 0:26					
24	T Caudill	Personal Foul			2 0:26		12	B Nall	Enter Game	for 44 A Lynch
				13-33	2 0:26	-20	20	J Reed	FT Made	
30	K Willett	Turn Over	(Bad Pass)		2 0:11					
					2 0:08		22	S Nash	Steal	
					2 0:02		22	S Nash	Turn Over	(Fumble)
11	K Kinard	Steal			2 0:02					

OFFICIAL NCAA BASKETBALL BOX SCORE
Presentation Toppers vs Union County Bravettes

03/22/2000 3:00 pm
1st Half Box Score

Arena Girls' Sweet 16, McBrayer Arena
City, State Richmond, KY

No.	Presentation Toppers	Total FG		3-point		FT	FTA	Rebounds			F	TP	A	TO	BLK	STL	MIN
		FG	FGA	FG	FGA			Off	Def	Tot							
4	April Young	0	0	0	0	0	0	0	0	0	0	0	0	0	0	DNP	
10	* Anne Hutchens	3	4	2	3	4	4	1	3	4	1	12	2	2	1	0	16:00
12	Blaire Nail	0	0	0	0	0	0	0	1	1	1	0	1	1	0	1	9:04
14	Susanne Firestone	0	0	0	0	0	0	0	0	0	0	0	0	0	0	0	DNP
20	* Julia Reed	1	1	0	0	1	3	1	1	2	0	3	0	0	0	0	7:22
22	* Sarah Nash	2	5	0	0	2	2	2	2	4	0	6	1	3	0	2	12:47
24	Dominique Derrick	0	2	0	0	0	0	0	1	1	1	0	0	1	0	1	11:17
30	Megan Maquire	0	0	0	0	0	0	0	0	0	0	0	0	0	0	0	DNP
34	* Morgan Darby	1	2	1	2	0	0	0	0	0	0	3	0	1	0	0	12:33
40	* Joleen Phillips	2	3	0	1	1	1	0	0	0	2	5	0	0	0	0	4:43
42	Kristy Lynch	0	0	0	0	0	0	0	0	0	0	0	0	0	0	0	DNP
44	Amy Lynch	2	4	0	0	0	0	0	0	0	1	4	1	0	0	0	6:14
50	Jessica Votaw	0	0	0	0	0	0	0	0	0	0	0	0	0	0	0	DNP
52	Stephanie Johnson	0	0	0	0	0	0	0	0	0	0	0	0	0	0	0	DNP
54	Celia Hall	0	0	0	0	0	0	0	0	0	0	0	0	0	0	0	DNP
Team (Included in Totals)								1	2	3							
Totals		11	21	3	6	8	10	5	10	15	6	33	5	8	1	4	80

Total FG%: 1st half 11 - 21 (52.4%) 2nd half 0 - 0 (0.00%) Game 11 - 21 (52.4%) Deadball
 3Pt FG%: 1st half 3 - 6 (50.0%) 2nd half 0 - 0 (0.00%) Game 3 - 6 (50.0%) rebounds
 FT%: 1st half 8 - 10 (80.0%) 2nd half 0 - 0 (0.00%) Game 8 - 10 (80.0%) 1

No.	Union County Bravettes	Total FG		3-point		FT	FTA	Rebounds			F	TP	A	TO	BLK	STL	MIN
		FG	FGA	FG	FGA			Off	Def	Tot							
10	Kayla Tackett	0	0	0	0	0	0	0	0	0	0	0	0	0	0	0	DNP
11	* Kwila Kinard	3	5	0	0	0	0	1	1	2	1	6	1	1	0	2	15:07
12	Susan Byars	1	3	0	0	0	1	1	0	1	0	2	0	0	0	0	5:33
14	Megan Yates	0	0	0	0	0	0	0	0	0	0	0	0	0	0	0	DNP
15	Erin Gorman	0	0	0	0	0	0	0	0	0	0	0	0	0	0	0	DNP
20	Elizabeth Robinson	0	1	0	1	0	0	0	0	0	0	0	0	0	0	0	5:18
21	* Brandy Willett	0	2	0	2	1	2	0	1	1	1	1	0	2	0	1	11:35
22	Abby O'Nan	0	0	0	0	0	0	0	0	0	0	0	0	0	0	0	DNP
24	* Terra Caudill	0	3	0	0	0	0	0	1	1	1	0	0	2	0	0	12:14
30	* Kara Willett	0	3	0	0	0	0	1	1	2	3	0	1	1	1	1	12:38
32	* Brandi Young	2	2	0	0	0	0	0	1	1	2	4	1	3	0	1	13:47
35	Christy Jenkins	0	0	0	0	0	0	0	0	0	0	0	0	0	0	0	DNP
40	Devon Bradshaw	0	0	0	0	0	0	0	0	0	0	0	0	0	0	0	DNP
51	Jenna Thomas	0	0	0	0	0	0	0	0	0	0	0	0	0	0	0	DNP
54	Sara Buckman	0	1	0	1	0	0	0	0	0	0	0	0	2	0	0	3:48
Team (Included in Totals)								2	0	2							
Totals		6	20	0	4	1	3	5	5	10	8	13	3	11	1	5	80

Total FG%: 1st half 6 - 20 (30.0%) 2nd half 0 - 0 (0.00%) Game 6 - 20 (30.0%) Deadball
 3Pt FG%: 1st half 0 - 4 (0.00%) 2nd half 0 - 0 (0.00%) Game 0 - 4 (0.00%) rebounds
 FT%: 1st half 1 - 3 (33.3%) 2nd half 0 - 0 (0.00%) Game 1 - 3 (33.3%) 2

Technical Fouls: None

Attendance: Unknown

Officials: John Chamberlain, Eric Canady, Glenn Gray

	Score by Period	1st H	2nd H	Final	Record	Overall	Conf
Union County Bravettes		13	0	13	Bravettes	23-7	
Presentation Toppers		33	0	33	Toppers	26-3	

	Bravettes Toppers		Bravettes Toppers		Bravettes Toppers			
Points off Turnovers	2	13	Second Effort Points	0	7	Bench Points	2	4
Points in the Paint	10	10	3 Point Points	0	9	Free Throw Points	1	8
Largest Lead	13	33 (20 pts)	Lead Changes	2		Number of Ties	3	

University of Kentucky Basketball - Play by Play Report - Period 3 (pg 1)

Union County Bravettes vs. Presentation Toppers

Date: 03/22/2000 Time: 3:00 pm Site: Girls' Sweet 16, McBrayer Arena-Richmond, KY Attendance: 4,362

##	Name	Action	Score	Clock	Diff	##	Name	Action	Action
11	K Kinard	Leave Game		3 8:00					
20	E Robinson	Leave Game		3 8:00					
24	T Caudill	Leave Game		3 8:00					
30	K Willett	Leave Game		3 8:00					
11	K Kinard	Enter Game		3 8:00					
21	B Willett	Enter Game		3 8:00					
24	T Caudill	Enter Game		3 8:00					
30	K Willett	Enter Game		3 8:00					
32	B Young	Enter Game		3 8:00					
				3 8:00		10	A Hutchens	Leave Game	
				3 8:00		12	B Nail	Leave Game	
				3 8:00		20	J Reed	Leave Game	
				3 8:00		22	S Nash	Leave Game	
				3 8:00		10	A Hutchens	Enter Game	for 24 D Derrick
				3 8:00		20	J Reed	Enter Game	
				3 8:00		22	S Nash	Enter Game	
				3 8:00		34	M Darby	Enter Game	
				3 8:00		40	J Phillips	Enter Game	
11	K Kinard	Personal Foul	13-34	3 7:51	-21	40	J Phillips	FT Made	
				3 7:51		40	J Phillips	FT Attempt	20 J Reed Off Reb
32	B Young	Personal Foul		3 7:49					
12	S Byars	Enter Game		3 7:44		20	J Reed	Turn Over	(Bad Pass)
21	B Willett	Layup Made	15-34	3 7:38	-19	22	S Nash	Layup Made	10 A Hutchens Assist
			15-36	3 6:43	-21				
12	S Byars	FG Attempt		3 6:17		22	S Nash	Steal	
24	T Caudill	Turn Over		3 5:59		40	J Phillips	FG Attempt	
				3 5:57					
12	S Byars	Block		3 5:46		20	J Reed	Def Rebound	
11	K Kinard	Layup Att		3 5:41					
12	S Byars	Putback Att		3 5:39					
12	S Byars	Personal Foul		3 5:19					
11	K Kinard	Personal Foul		3 5:18					
20	E Robinson	Enter Game		3 5:18		40	J Phillips	FG Attempt	
20	E Robinson	Def Rebound		3 5:05		10	A Hutchens	Def Rebound	
21	B Willett	FG Attempt		3 4:49		34	M Darby	Turn Over	(Fumble)
				3 4:36					
12	S Byars	Steal		3 4:33					
21	B Willett	3Pt Made	18-36	3 4:25	-18	10	A Hutchens	FG Attempt	Toppers Off Reb
				3 4:46					
54	S Buckman	Enter Game		3 3:45		40	J Phillips	3Pt Made	34 M Darby Assist
21	B Willett	3Pt Attempt		3 3:33	-21	Toppers	Def Rebound		
				3 3:22		20	J Reed	Leave Game	
				3 3:22		22	S Nash	Leave Game	
				3 3:22		12	B Nail	Enter Game	for 34 M Darby
				3 3:22		24	D Derrick	Enter Game	
				3 3:22		44	A Lynch	Enter Game	
				3 3:10		44	A Lynch	FG Attempt	40 J Phillips Off Reb
				3 3:08	-23	40	J Phillips	Putback Made	
20	E Robinson	3Pt Made	18-41	3 2:55	-20				
21	B Willett	Personal Foul	21-41	3 2:48					
				3 2:48					
32	B Young	Enter Game		3 2:48					
32	B Young	Def Rebound		3 2:43		10	A Hutchens	FG Attempt	
20	E Robinson	3Pt Attempt		3 2:32					
21	B Willett	FG Attempt		3 2:27					
54	S Buckman	3Pt Attempt		3 2:11		10	A Hutchens	Def Rebound	
21	B Willett	Personal Foul		3 2:08					
				3 2:02		12	B Nail	Turn Over	
32	B Young	FG Attempt		3 2:00		24	D Derrick	Def Rebound	
			21-43	3 1:55	-22	10	A Hutchens	Layup Made	24 D Derrick Assist
				3 1:32		44	A Lynch	Def Rebound	
54	S Buckman	FG Attempt		3 1:29		24	D Derrick	Turn Over	(Traveling)
				3 1:29		34	M Darby	Enter Game	for 10 A Hutchens
				3 1:28		24	D Derrick	Personal Foul	

University of Kentucky Basketball - Play by Play Report - Period 3 (pg 2)

Union County Bravettes vs. Presentation Toppers

Date: 03/22/2000 Time: 3:00 pm Site: Girls' Sweet 16, McBrayer Arena-Richmond, KY Attendance: 4,362

##	Name	Action	Action	Score	Clock	Diff	##	Name	Action	Action
	Bravettes	20 Sec Time Out			3 1:28					
11	K Kinard	Enter Game	for 20 E Robinson		3 1:28					
					3 1:28		12	B Nall	Personal Foul	
24	T Caudill	Enter Game	for 54 S Buckman		3 1:28					
24	T Caudill	Turn Over	(Bad Pass)		3 1:21					
					3 1:18		40	J Phillips	Steal	
30	K Willett	Block			3 1:11		12	B Nall	FG Attempt	Toppers Off Reb
					3 1:05		22	S Nash	Enter Game	for 34 M Darby
					3 0:49		12	B Nall	FG Attempt	44 A Lynch Off Reb
30	K Willett	Block	30 K Willett Def Reb		3 0:46		44	A Lynch	Putback Att	
					3 0:44		24	D Derrick	Personal Foul	
54	S Buckman	Enter Game	for 24 T Caudill		3 0:44					
32	B Young	FG Attempt			3 0:27		40	J Phillips	Def Rebound	
32	B Young	Personal Foul			3 0:23					
12	S Byars	Enter Game	for 32 B Young		3 0:23		40	J Phillips	FT Made	
				21-44	3 0:23	-23	40	J Phillips	FT Attempt	
30	K Willett	Def Rebound			3 0:23					
30	K Willett	FG Made	11 K Kinard Assist	23-44	3 0:03	-21				

End of Period Summary Bravettes 23 Toppers 44

Largest Lead: Bravettes 18 Toppers 41 (23 pts)
 Lead in Period: Bravettes 18 Toppers 41 (23 pts)
 2 for 0 oppo pts
 4 for 0 pts
 4/15 for 26.7 %
 0/0 for 0.00 %

Turnovers
 2nd Chances
 Field Goals
 Free Throws

Lead Changes: 2 Ties: 3
 Lead Changes: 0 Ties: 0 (this period)
 4 for 5 oppo pts
 5 for 2 pts
 4/12 for 33.3 %
 2/4 for 50.0 %

University of Kentucky Basketball - Play by Play Report - Period 4 (pg 1)

Union County Bravettes vs. Presentation Toppers

Date: 03/22/2000 Time: 3:00 pm Site: Girls' Sweet 16, McBrayer Arena-Richmond, KY Attendance: 4,362

##	Name	Action	Score	Clock	Diff	##	Name	Action	Action
54	S Buckman	Turn Over		4 7:52					
				4 7:45		12	B Nail	Turn Over	(Bad Pass)
54	S Buckman	3Pt Made	26-44	4 7:45	-18				
30	K Willett	Def Rebound		4 7:45		44	A Lynch	FG Attempt	
30	K Willett	FG Attempt		4 7:45			Toppers	Def Rebound	
				4 6:52		12	B Nail	Turn Over	
21	B Willett	Steal		4 6:51					
11	K Kinard	FG Made	28-44	4 6:47	-16				
11	K Kinard	FT Made	29-44	4 6:45	-15	12	B Nail	Personal Foul	
				4 6:28		12	B Nail	FG Attempt	Toppers Off Reb
				4 6:28		10	A Hutchens	Enter Game	for 44 A Lynch
12	S Byars	Personal Foul	29-45	4 6:23	-16	40	J Phillips	FT Made	
11	K Kinard	Def Rebound		4 6:23		40	J Phillips	FT Attempt	
54	S Buckman	3Pt Attempt		4 6:10		40	J Phillips	Def Rebound	
12	S Byars	Personal Foul		4 6:02					
				4 6:02		20	J Reed	Enter Game	for 12 B Nail
20	E Robinson	Enter Game		4 6:02					
		for 30 K Willett	29-46	4 6:02	-17	40	J Phillips	FT Made	
21	B Willett	Def Rebound		4 6:02		40	J Phillips	FT Attempt	
54	S Buckman	FG Made	31-46	4 5:53	-15				
32	B Young	Enter Game		4 5:22					
		for 12 S Byars	31-48	4 5:02		10	A Hutchens	FG Attempt	40 J Phillips Off Reb
				4 4:59	-17	40	J Phillips	Putback Made	
32	B Young	Personal Foul		4 4:58					
30	K Willett	Enter Game		4 4:58		40	J Phillips	FT Made	
		for 32 B Young	31-49	4 4:58	-18				
21	B Willett	Turn Over		4 4:42					
		(Violation)		4 4:40		24	D Derrick	Steal	
20	E Robinson	Personal Foul		4 4:38					
24	T Caudill	Enter Game		4 4:38					
		for 21 B Willett	31-50	4 4:38	-19	24	D Derrick	FT Attempt	
				4 4:38		24	D Derrick	FT Made	
Bravettes		Def Rebound		4 4:34					
54	S Buckman	FG Attempt		4 4:34		10	A Hutchens	Def Rebound	
				4 4:18		20	J Reed	Turn Over	(Bad Pass)
20	E Robinson	3Pt Attempt		4 3:53			Toppers	Def Rebound	
				4 3:52		12	B Nail	Enter Game	for 20 J Reed
			31-52	4 3:44	-21	24	D Derrick	FG Made	
30	K Willett	Personal Foul		4 3:43					
				4 3:43		44	A Lynch	Enter Game	for 22 S Nash
54	S Buckman	Def Rebound		4 3:43		24	D Derrick	FT Attempt	
30	K Willett	FG Attempt		4 3:34					
40	D Bradshaw	Enter Game		4 3:32					
		for 30 K Willett		4 3:24		40	J Phillips	Personal Foul	
54	S Buckman	FG Attempt		4 3:21		44	A Lynch	Def Rebound	
11	K Kinard	Personal Foul	31-53	4 3:20	-22	44	A Lynch	FT Made	
			31-54	4 3:20	-23	44	A Lynch	FT Made	
24	T Caudill	3Pt Attempt		4 3:16					
11	K Kinard	FG Attempt		4 3:13					
54	S Buckman	Putback Made	33-54	4 3:11	-21				
		for 11 K Kinard Off Reb		4 3:04	-23	10	A Hutchens	Layup Made	24 D Derrick Assist
		54 S Buckman Off Reb	35-56	4 3:01	-21				
11	K Kinard	Layup Made		4 2:17					
		for 20 E Robinson Assist		4 2:28					
				4 2:28		10	A Hutchens	Leave Game	
				4 2:28		12	B Nail	Leave Game	
				4 2:28		24	D Derrick	Leave Game	
				4 2:28		40	J Phillips	Leave Game	
				4 2:28		10	A Hutchens	Enter Game	for 44 A Lynch
				4 2:28		24	D Derrick	Enter Game	
				4 2:28		40	J Phillips	Enter Game	
				4 2:28		50	J Votaw	Enter Game	for 50 J Votaw
				4 2:28		50	J Votaw	Enter Game	
54	S Buckman	FG Attempt		4 2:19		52	S Johnson	Enter Game	
24	T Caudill	Off Rebound		4 2:13		10	A Hutchens	Block	

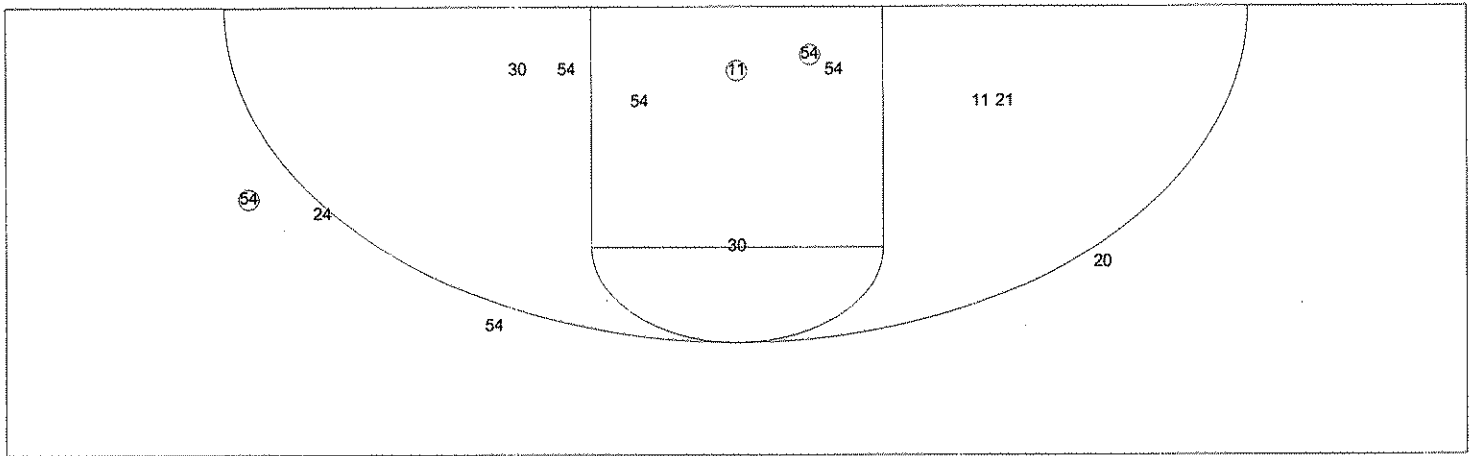
University of Kentucky Basketball - Play by Play Report - Period 4 (pg 2)

Union County Bravettes vs. Presentation Toppers

Date: 03/22/2000 Time: 3:00 pm Site: Girls' Sweet 16, McBrayer Arena-Richmond, KY Attendance: 4,362

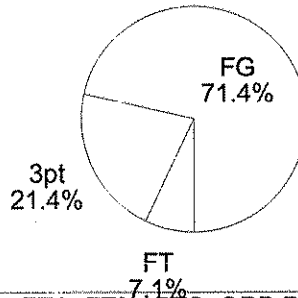
##	Name	Action	Action	Score	Clock	Diff	##	Name	Action	Action
24	T Caudill	Putback Made		37-56	4 2:13	-19				
21	B Willett	Enter Game	for 54 S Buckman		4 2:13		10	A Hutchens	Personal Foul	
24	T Caudill	FT Attempt			4 2:13		40	J Phillips	Def Rebound	
				37-59	4 1:25	-22	50	J Votaw	3Pt Made	40 J Phillips Assist
21	B Willett	FG Attempt			4 1:07		10	A Hutchens	Def Rebound	
11	K Kinard	Personal Foul			4 1:06					
15	E Gorman	Enter Game	for 11 K Kinard		4 1:06					
15	E Gorman	Leave Game			4 1:06					
20	E Robinson	Leave Game			4 1:06					
21	B Willett	Leave Game			4 1:06					
24	T Caudill	Leave Game			4 1:06					
15	E Gorman	Enter Game	for 40 D Bradshaw		4 1:06					
24	T Caudill	Enter Game			4 1:06					
14	M Yates	Enter Game			4 1:06					
51	J Thomas	Enter Game			4 1:06					
22	A O'Nan	Enter Game	for 14 M Yates		4 1:06					
15	E Gorman	Leave Game			4 1:06					
22	A O'Nan	Leave Game			4 1:06					
24	T Caudill	Leave Game			4 1:06					
14	M Yates	Enter Game	for 51 J Thomas		4 1:06					
15	E Gorman	Enter Game			4 1:06					
51	J Thomas	Enter Game			4 1:06					
35	C Jenkins	Enter Game			4 1:06					
22	A O'Nan	Enter Game			4 1:06					
					4 1:06		10	A Hutchens	Leave Game	
					4 1:06		24	D Derrick	Leave Game	
					4 1:06		40	J Phillips	Leave Game	
					4 1:06		50	J Votaw	Leave Game	
					4 1:06		10	A Hutchens	Enter Game	for 52 S Johnson
					4 1:06		52	S Johnson	Enter Game	
					4 1:06		30	M Maquire	Enter Game	
					4 1:06		14	S Firestone	Enter Game	
					4 1:06		50	J Votaw	Enter Game	
				37-60	4 1:06	-23	10	A Hutchens	FT Made	
14	M Yates	Def Rebound			4 1:06		10	A Hutchens	FT Attempt	
					4 1:04		4	A Young	Enter Game	for 10 A Hutchens
10	K Tackett	Enter Game	for 35 C Jenkins		4 1:04					
					4 0:50		42	K Lynch	Enter Game	for 52 S Johnson
					4 0:50		54	C Hall	Enter Game	for 50 J Votaw
35	C Jenkins	Enter Game	for 51 J Thomas		4 0:50					
51	J Thomas	Enter Game	for 22 A O'Nan		4 0:34					
35	C Jenkins	Def Rebound			4 0:22		54	C Hall	3Pt Attempt	
35	C Jenkins	Turn Over			4 0:16					
14	M Yates	Personal Foul			4 0:16					
					4 0:16		4	A Young	FT Attempt	Toppers Deadball Reb
					4 0:16		4	A Young	FT Attempt	54 C Hall Off Reb
35	C Jenkins	Def Rebound			4 0:13		54	C Hall	Putback Att	
					4 0:08		30	M Maquire	Personal Foul	
15	E Gorman	FT Attempt			4 0:08		42	K Lynch	Def Rebound	
14	M Yates	Block			4 0:02		4	A Young	FG Attempt	Toppers Off Reb
					4 0:02		52	S Johnson	Enter Game	for 14 S Firestone
					4 0:00		54	C Hall	Turn Over	(Bad Pass)

University of Kentucky Basketball - TEAM SHOT CHART for the Bravettes in Period 4
 Union County Bravettes vs. Presentation Toppers
 DATE: 03/22/2000 TIME: 3:00 pm SITE: Girls' Sweet 16, McBrayer Arena-Richmond, KY

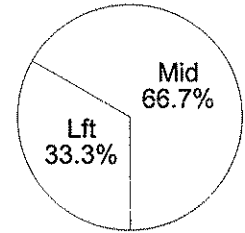


Shot Summary	M/A	%	PTS
3Pt FG	1/4	25.0%	3
2Pt FG	5/12	41.7%	10
Layups - L	1/1	100.0%	2
Layups - R	0/0	0.0%	0
Dunks	0/0	0.0%	0
Putbacks	2/2	100.0%	4
Overall Shooting	6/16	37.5%	13
Free Throws	1/3	33.3%	1
Total Points			14

Scoring Distribution

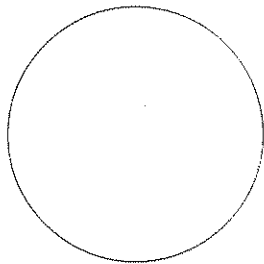


Scoring Locations

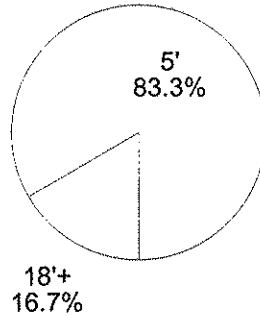


By Period	FG	FGA	FG%	3Pt	3PA	3P%	FT	FTA	FT%	PTS	ORB	DRB	TR	PF	AST	TO	BS	ST	P/S
1st Period	6	11	54.5	0	2	0.00	0	1	0.00	12	1	3	4	4	3	5	0	3	1.09
2nd Period	0	9	0.00	0	2	0.00	1	2	50.0	1	4	2	6	4	0	6	1	2	0.10
3rd Period	4	15	26.7	2	5	40.0	0	0	0.00	10	4	5	9	7	3	2	3	1	0.67
4th Period	6	16	37.5	1	4	25.0	1	3	33.3	14	5	8	13	8	3	3	1	1	0.82
Game	16	51	31.4	3	13	23.1	2	6	33.3	37	14	18	32	23	9	16	5	7	0.69

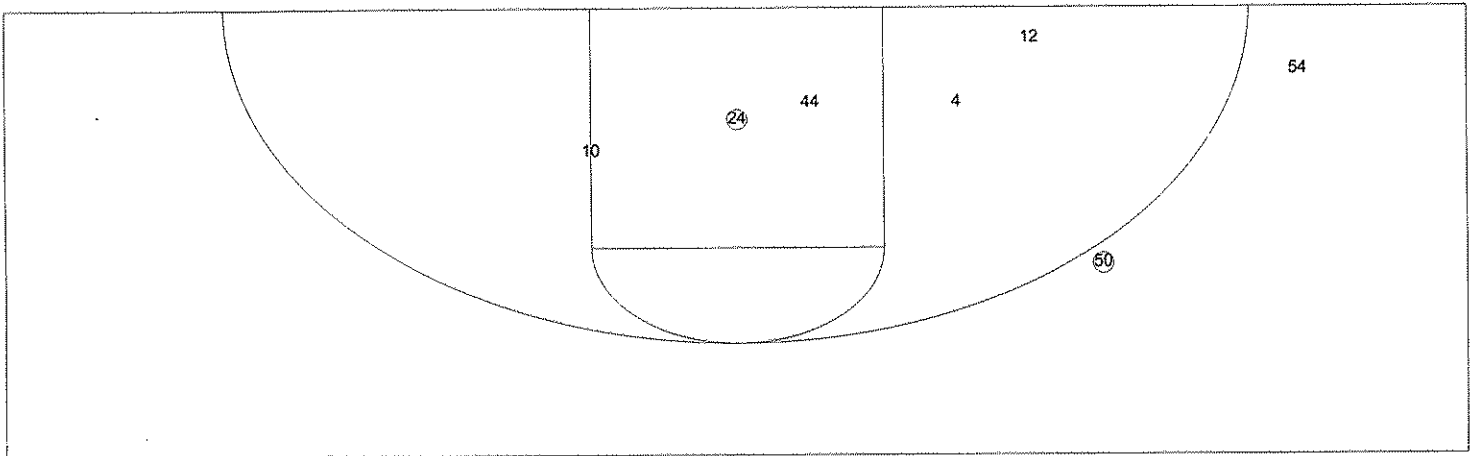
Scoring Breakdown



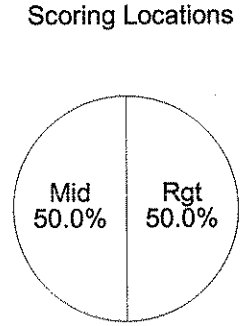
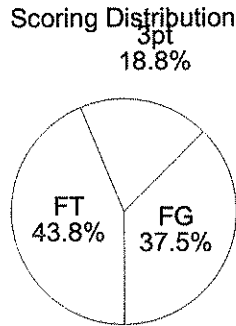
Scoring Range



University of Kentucky Basketball - TEAM SHOT CHART for the Toppers in Period 4
 Union County Bravettes vs. Presentation Toppers
 DATE: 03/22/2000 TIME: 3:00 pm SITE: Girls' Sweet 16, McBrayer Arena-Richmond, KY

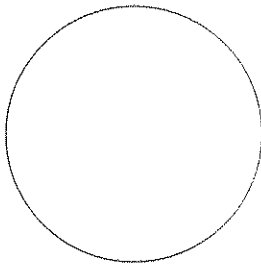


Shot Summary	M/A	%	PTS
3Pt FG	1/2	50.0%	3
2Pt FG	3/8	37.5%	6
Layups - L	0/0	0.0%	0
Layups - R	1/1	100.0%	2
Dunks	0/0	0.0%	0
Putbacks	1/2	50.0%	2
Overall Shooting	4/10	40.0%	9
Free Throws	7/14	50.0%	7
Total Points			16



By Period	FG	FGA	FG%	3Pt	3PA	3P%	FT	FTA	FT%	PTS	ORB	DRB	TR	PF	AST	TO	BS	ST	P/S
1st Period	5	9	55.6	1	3	33.3	3	5	60.0	14	1	5	6	3	2	5	0	0	1.27
2nd Period	6	12	50.0	2	3	66.7	5	5	100	19	4	5	9	3	3	3	1	4	1.36
3rd Period	4	12	33.3	1	1	100	2	4	50.0	11	5	7	12	3	3	4	0	2	0.79
4th Period	4	10	40.0	1	2	50.0	7	14	50.0	16	4	8	12	4	2	4	1	1	0.94
Game	19	43	44.2	5	9	55.6	17	28	60.7	60	14	25	39	13	10	16	2	7	1.05

Scoring Breakdown



Scoring Range

